



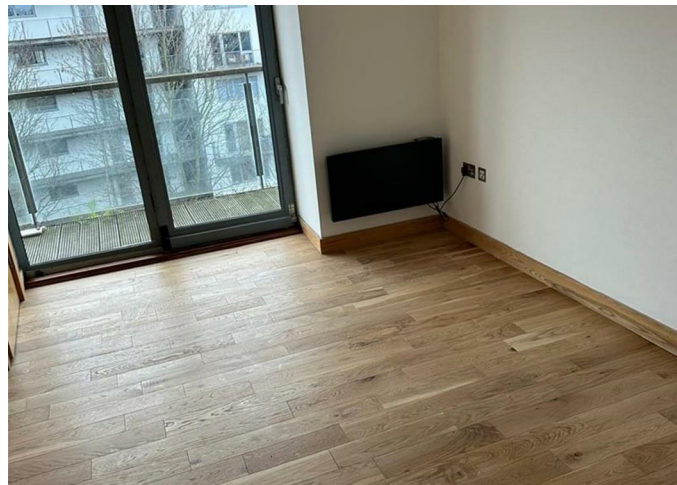
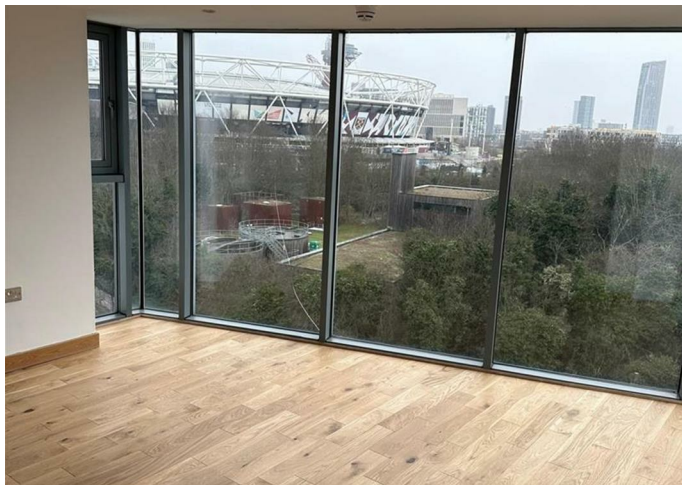
Apartment

FLAT 67, 58 DACE ROAD, LONDON, E3 2NX

Per Calendar Month

£2,500

FEATURES



2 Bedroom Apartment located in London

A modern style 2 bedroom apartment located on the 6th floor of the tower section of the sought-after Iron Works, in the desirable Bow E3 area, benefiting from impressive views overlooking the Olympic Stadium. The property offers 2 large bedrooms, 1 modern bathroom, and a spacious lounge, providing an ideal space for both relaxing and entertaining. The apartment can be provided furnished if required. Please note that bills are not included.

The location is excellent, set moments from Queen Elizabeth Olympic Park and its extensive green spaces, leisure facilities, and scenic walking routes. A wide range of local amenities are nearby, including cafés, restaurants, gyms, supermarkets, and everyday convenience stores, with Westfield Stratford City close by offering a large selection of shops, dining, and entertainment options. The property is well connected with convenient transport links to Stratford, Bow, and Mile End, providing easy access to Canary Wharf, the City, and Central London.

Call us on


02089802499

info@citymoveestate.co.uk

www.citymoveestate.co.uk

Council Tax Band

C

| Energy Efficiency Rating | | |
|---|---------|---|
| | Current | Potential |
| Very energy efficient - lower running costs | | |
| (92 plus) A | | |
| (81-91) B | | |
| (69-80) C | | |
| (55-68) D | | |
| (39-54) E | | |
| (21-38) F | | |
| (1-20) G | | |
| Not energy efficient - higher running costs | | |
| England & Wales | | EU Directive 2002/91/EC  |

Agents Note: Whilst every care has been taken to prepare these particulars, they are for guidance purposes only. All measurements are approximate and are for general guidance purposes only and whilst every care has been taken to ensure their accuracy, they should not be relied upon and potential buyers are advised to recheck the measurements

